

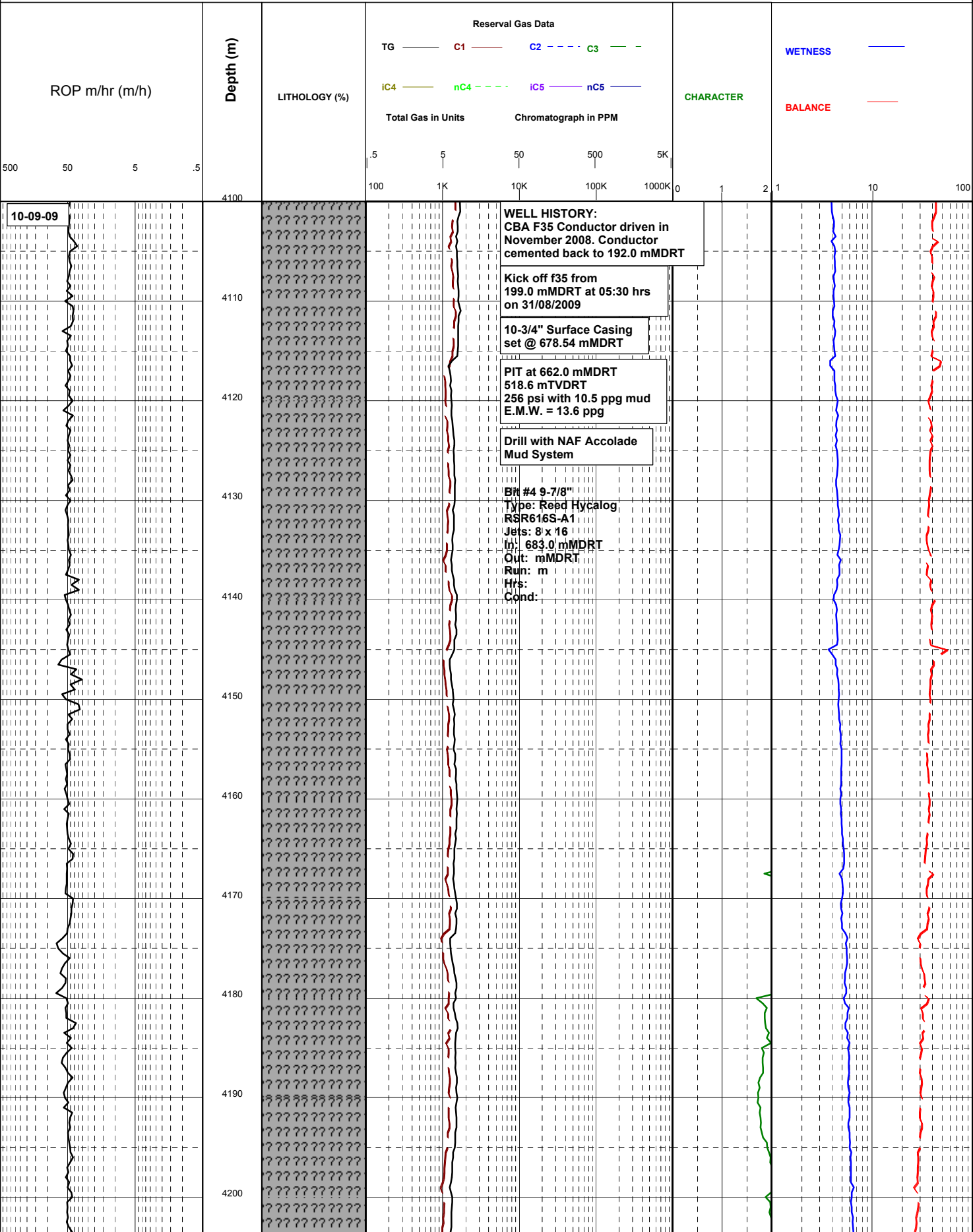


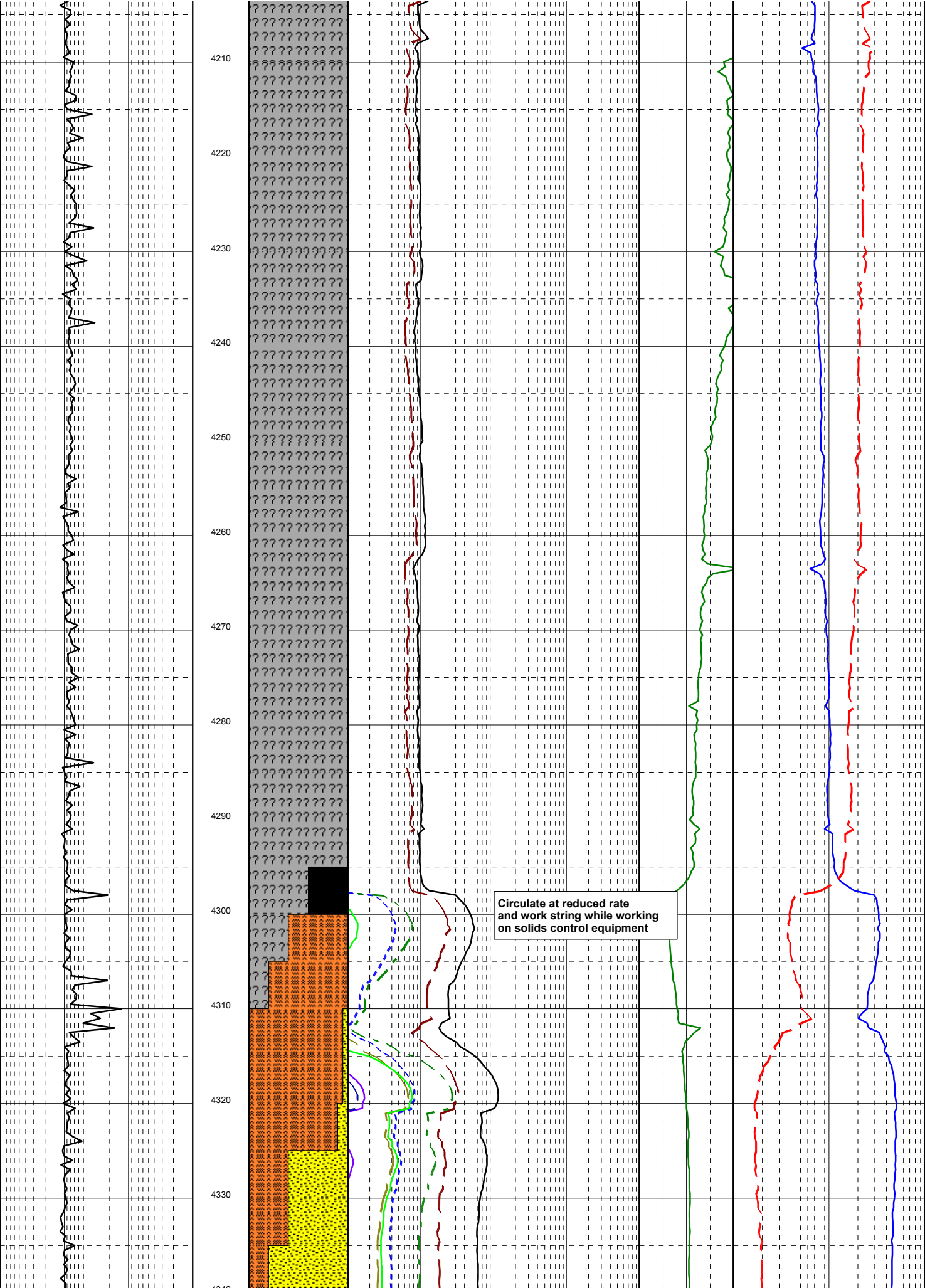
Reserval Gas Ratio Log

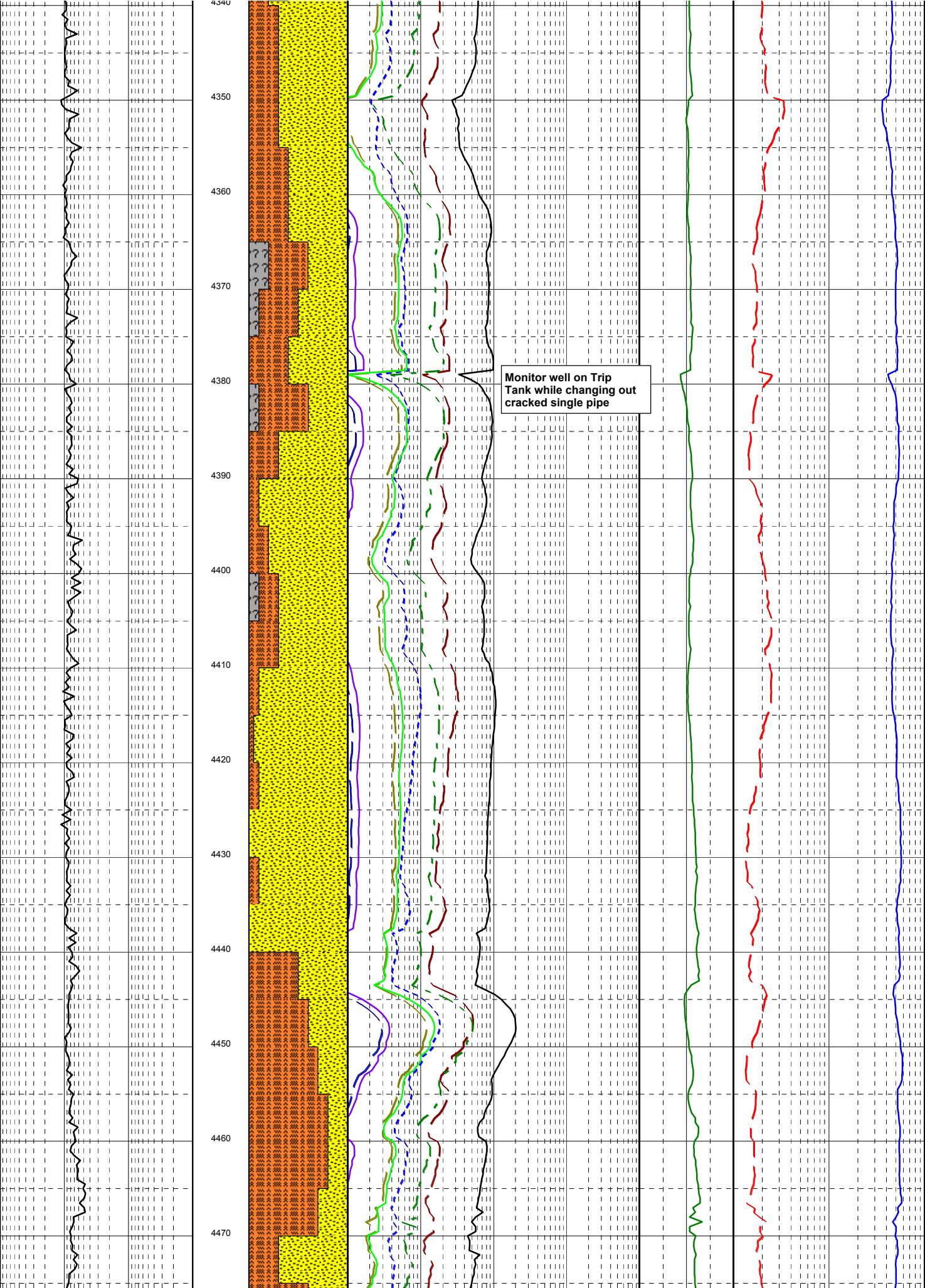


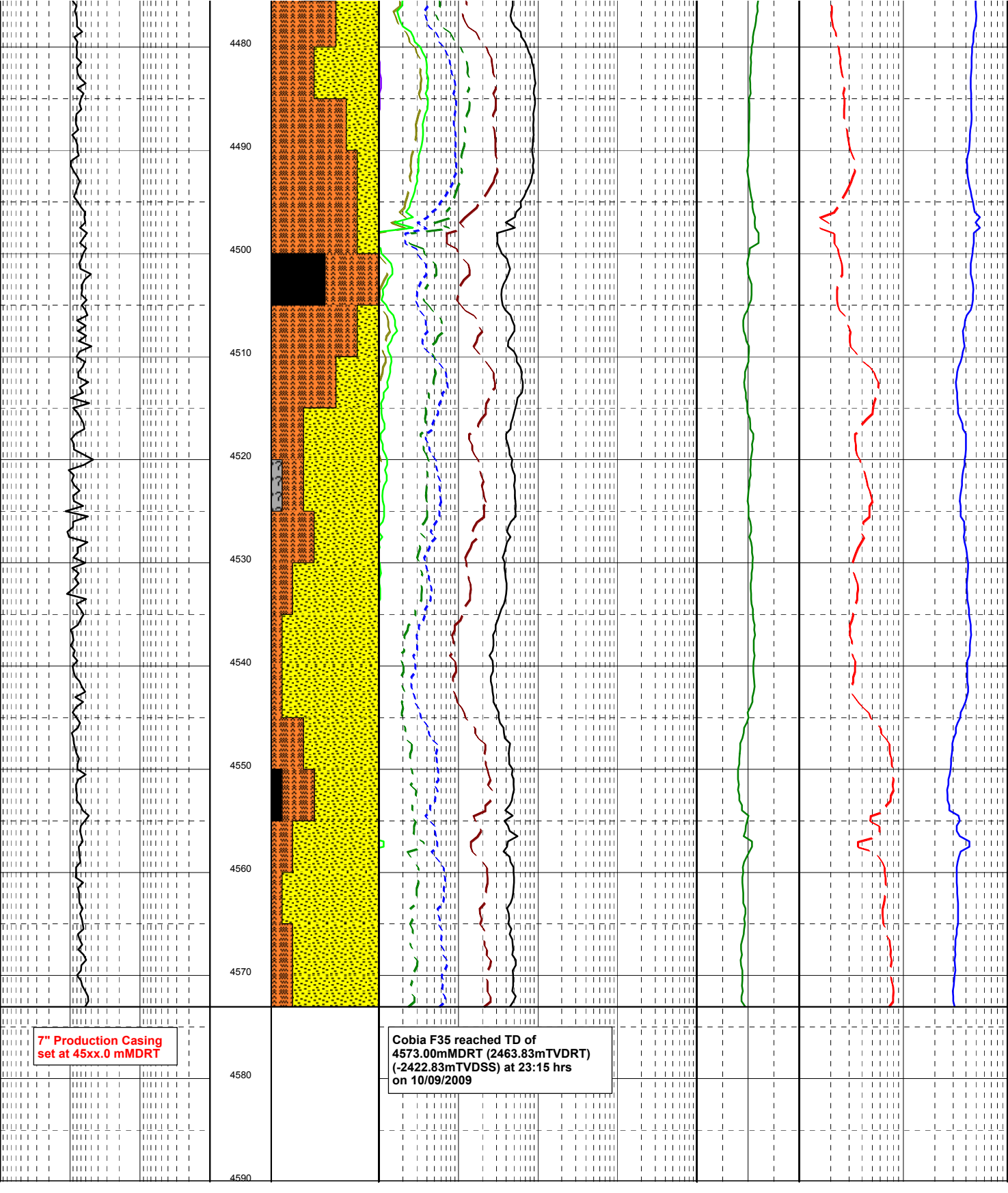
Well : CBA F35

Scale : 1 : 500









7" Production Casing
set at 45xx.0 mMDRT

Cobia F35 reached TD of
4573.00mMDRT (2463.83mTVDRT)
(-2422.83mTVDSS) at 23:15 hrs
on 10/09/2009

4480
4490
4500
4510
4520
4530
4540
4550
4560
4570
4580
4590